



Kimberley Road NW6

Parkheath
Sold on Service





Kimberley Road, NW6 £965,000 Share of Freehold

- Stunning two-bedroom, two-bathroom penthouse apartment in Kimberly Court
- Located in the heart of Queen's Park, within a sought-after development
- Occupying the top floor with lift access
- Abundance of natural light from large dual-aspect windows
- Two generous double bedrooms and two luxury bathrooms finished in Mandarin Stone tiles
- Spacious reception room with access to a large private balcony
- Contemporary kitchen with access to a private roof terrace
- Benefits include air conditioning, gated parking, and communal gardens
- Moments from Queen's Park Station and Salusbury Road amenities
- EPC: Rating C, Council Tax: Brent band E

Belsize Park/Hampstead
208 Haverstock Hill
NW3 2AG
Sales 020 7431 1234
Lettings 020 7431 3104
nw3@parkheath.com

South/West Hampstead
192 West End Lane
NW6 1SG
Sales & Lettings
Tel 020 7794 7111
192@parkheath.com

Kensal Rise
54-56 Chamberlayne Rd
NW10 3JH
Tel 020 8960 4845
kensal@parkheath.com

Property Management
192 West End Lane
NW6 1SG
020 7433 6174
pm@parkheath.com

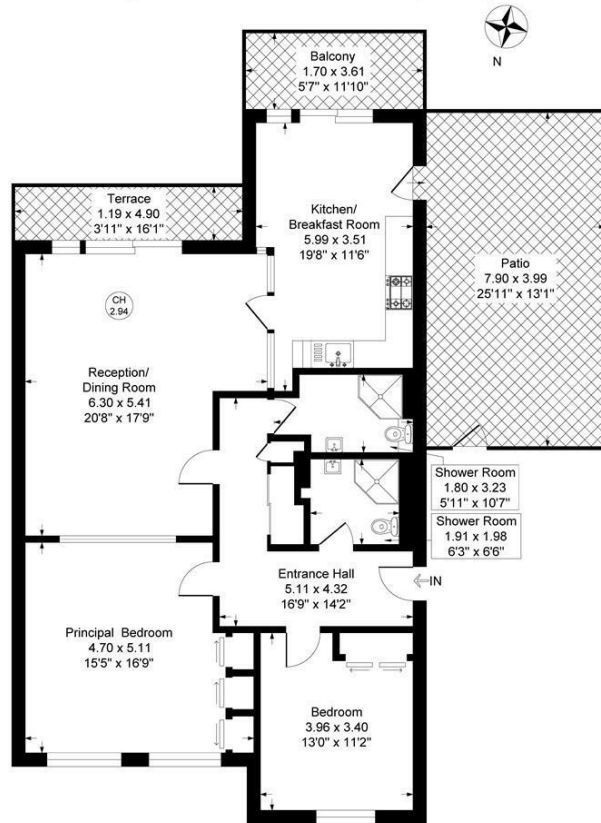
www.parkheath.com

Parkheath
Sold on Service

Brent Tax band E

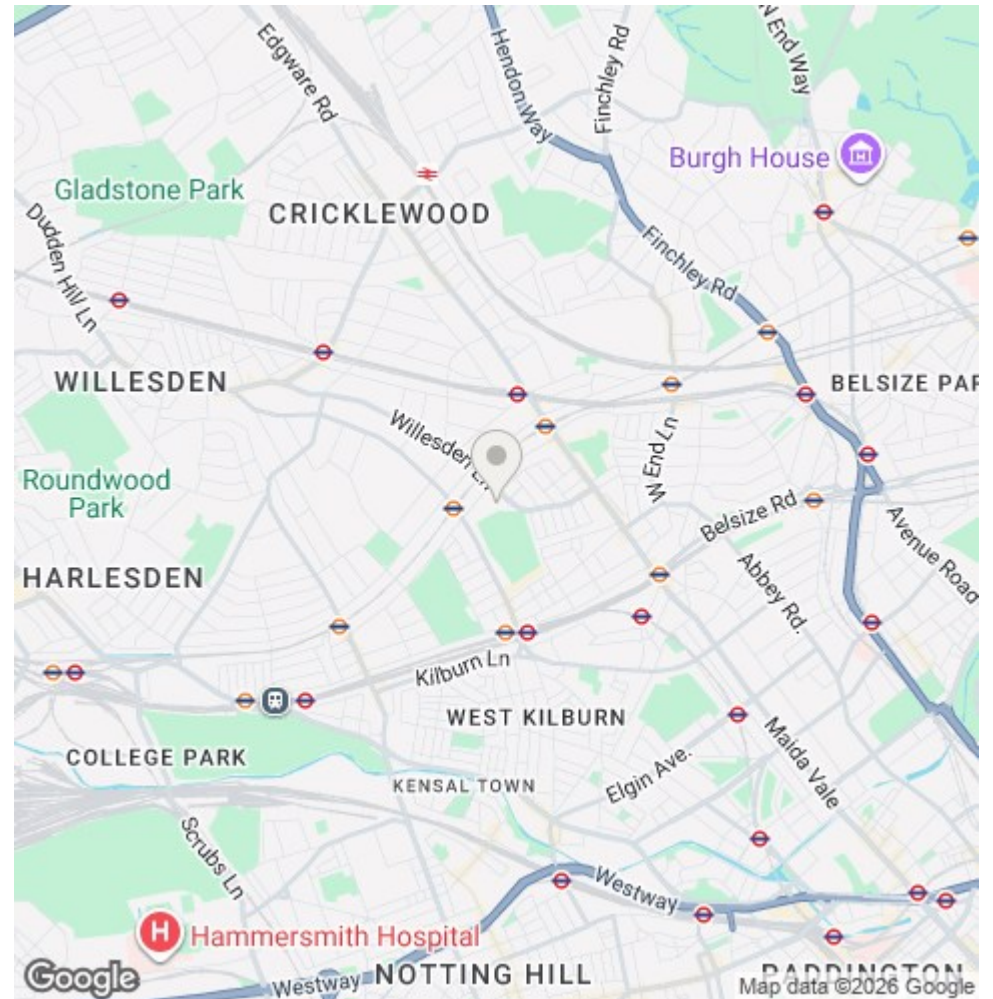
Kimberley Court, Kimberley Road London, NW6

Approximate Gross Internal Floor Area = 112.0 sq m / 1206 sq ft



Third Floor

Illustration for identification purposes only, measurements are approximate, not to scale.



The particulars do not constitute part of an offer or contract. The particulars, including text, photographs and plans, are for the guidance only of prospective purchasers/tenants and must not be relied upon as statements of fact. The descriptions provided therein represent the opinion of the author and whilst given in good faith should not be construed as statements of fact. Nothing in these particulars shall be deemed a statement that the property is in good condition or otherwise or that any services or facilities are in good working order. All measurements are approximate